



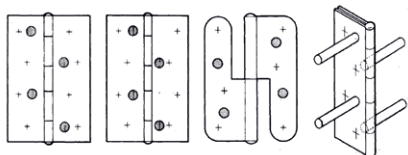
SEALMASTER INTUMESCENT PLUGS

For additional protection at hinges, striker plates and pivot mechanism of doors

HINGES

Two 7mm diameter plain holes are drilled through each plate in addition to the existing screw holes. These holes are offset in order that the plates are not weakened. After fitting the hinges, 6mm diameter x 40mm deep holes are drilled, through the plain holes, into the wood and plugs are inserted flush with the hinge plates

The layout of the countersunk holes for fixing screws in 100mm butt hinges varies according to the manufacturer. Three of the most common are shown here, together with suggested positions for Sealmaster Intumescent Plugs.

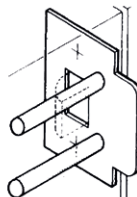


Screw fixing holes + Sealmaster Intumescent Plugs

Where plugs have to be fitted to longer butt hinges this must be at the rate of two extra plugs per 50mm of additional length of hinge.

LOCK/LATCH STRIKER PLATE

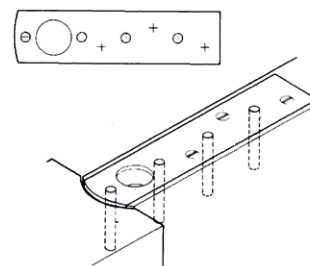
Two 7mm diameter plain holes are drilled in the plate, so as not to weaken it, or affect its normal operation. The plugs are fitted into the wood in the same manner as for hinges. Gaps around mortised areas should be filled with Intumescent Compound or Plaster to reduce fire spread.



Lock/Latch Striker Plate

PIVOT MECHANISM

Intumescent sealing around pivot doors can be completed by incorporating Sealmaster Intumescent Plugs in the top strap assembly. The positioning of the plugs is determined by the shape of the strap and the layout of the screw fixing holes, as these can vary according to make.



Pivot Mechanism

FIRE & SMOKE VENTILATORS

INTRODUCTION

Fire door ventilators permit a free flow of air up to 160m³/hour, and can be fitted within 30 and 60 minute fire doors and walls, whilst maintaining the integrity of the fire compartment. Two models are available, offering a choice of fire or fire and smoke protection and both are easily installed with minimal restrictions on siting.

DESCRIPTION

Both ventilators are manufactured from galvanized steel sheets, with louvre plates on each face. Standard finish is satin aluminium, with coloured finishes to special order.

APPLICATION

Ventilators can be used in new or existing fire doors and can be mounted in a high or low position. An opening of 260mm x 135mm is required and

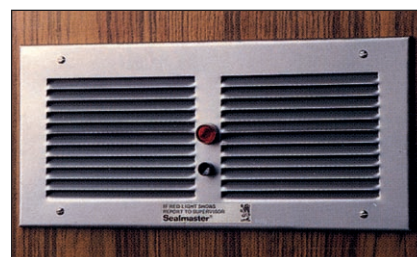
once the ventilator is in position any gaps should be sealed with Intumescent Compound. Ventilators can also be fitted into walls using special extender units.

OPERATION

The intumescent seal in both units is activated by the high temperatures experienced in a fire. In model VH60/FS a cold smoke shutter which is powered by the fire alarm circuit is triggered on activation of the fire or smoke alarm system. A warning light indicates when the shutter is closed and the power is reinstated.

OPTIONAL MODELS

Model VH60/F provides 60 minute protection against fire and is maintenance-free once fitted. It is ideal where fire, rather than cold smoke is



perceived to be the predominant risk. Where there is a risk of cold smoke, the model VH60/FS, which incorporates a magnetically-operated cold smoke shutter, should be specified.

AUTHORITY

Both models have been tested in 60 minute fire doors by TRADA, the VH60/FS model is also subject to an assessment by international Fire Consultants (IFC).