



# ACS-1 Smoke and Acoustic Perimeter Seal

## Introduction

Mann McGowan ACS-1 is a smoke and acoustic seal which is surface fixed to the door frame.

The seal has 3 separate air pockets when the door is closed.

## Features and Benefits

- Surface fixed to door frame with fitted high-tack self-adhesive tape
- No machining required
- Durable resilient fins and central bulb
- Cold smoke and acoustic seal
- Unique design is both hard-wearing and highly effective as an acoustic barrier
- Community Design Registration No 002969204-0001
- Minimum of 34-35dB can be achieved using standard FD30 and FD60 doors
- Successfully tested for cold smoke sealing as well as acoustic performance
- Co-extruded with robust rigid PVC mounting elements
- Available in widths of 10 and 12mm with standard length of 2100mm. Lengths up to 3000mm on request
- Available in a range of colours to suit application

# ACS-1 Smoke and Acoustic Perimeter Seal

## Description

ACS-1 has a rigid 'L' shaped PVC backing complete with self-adhesive tape with a soft rubber fin protruding from each corner with an additional semi circular rubber seal providing a buffer stop to the corner of the door leaf. The buffer seal also protects the two rubber wings from long term damage. It is available in widths of 10 and 12mm.

## Performance

Acoustic tests have been conducted in accordance with the standards listed below:

BS-EN 10140-1

BS-EN 10140-2

35dB can be achieved.

ACS-1 has been successfully tested to BS476 pt 31;1 for cold smoke sealing (air leakage).

Cycling test: 100,000 opening and closing cycles.

Certifire Certificate of Approval no. CF280 has been updated to include ACS-1 to complement our combined fire, smoke and acoustic seals Pyrostrip Twin Fin and Pyrostrip Flexifin.

## Lengths

ACS-1 is available as standard in 2200mm and 2500mm lengths, widths of 10mm x 10mm and 12mm x 12mm and in the following colours: clear, white, brown, dark brown, slate grey and black.

Other lengths can be provided to a maximum of 3000mm.

## Fitting

ACS-1 should be surface fixed at the junction of the door stop and frame at the point the doorleaf closes into the stop. Remove the backing paper from one side only and carefully position applying light pressure to locate the seal, carry out the same with the second leg and once satisfied that it is correctly positioned apply further pressure to both legs.

## Finish

ACS-1 is available in the following colours:

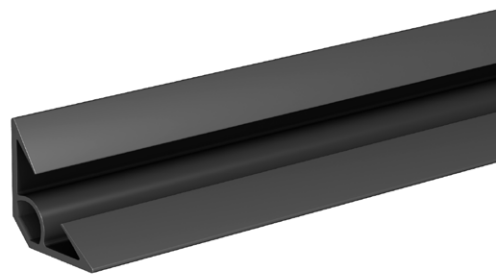
Clear

White

Brown

Dark Brown

Black



Acoustic Rating  
up to 35dB



Smoke  
1.7m<sup>3</sup>/h/m-25Pa



Opening & closing  
100,000 cycles



Insects

## Ordering

All Mann McGowan products can be ordered directly from our sales team on:

**+44 (0) 1252 333601**

or by email:

**sales@mannmccgowan.co.uk**

## Technical Services

Email: **technical@mannmccgowan.co.uk**

Mann McGowan can advise on the use and application of any of our products.

We can also provide presentations or attend site surveys at your request.

Our quality management system is registered in accordance with ISO 9001: 2015 by SGS Ltd.

*The contents of this document are copyright throughout the world and may not be reproduced without prior written permission of Mann McGowan Fabrications Ltd. Information in this document is provided for guidance and does not form any part of any contract.*



Glass & Glazing Federation



Intumescent Fire Seals Association



Supporter of  
FIRE DOOR  
INSPECTION SCHEME  
Qualifying Fire Door Professionals



BRITISH  
WOODWORKING  
FEDERATION



advancing architectural ironmongery

# MANN McGOWAN

Intumescent Fire Smoke & Acoustic Seals

Mann McGowan Unit 4, Brook Trading Estate, Deadbrook Lane, Aldershot, Hampshire GU12 4XB England  
Telephone: Aldershot +44 (0) 1252 333601 • Fax: Aldershot +44 (0) 1252 322724 • Email: sales@mannmccgowan.co.uk

[www.mannmccgowan.co.uk](http://www.mannmccgowan.co.uk)